

DUTCH INTERNMENT CAMP MAIL

'BAKHUIZEN'

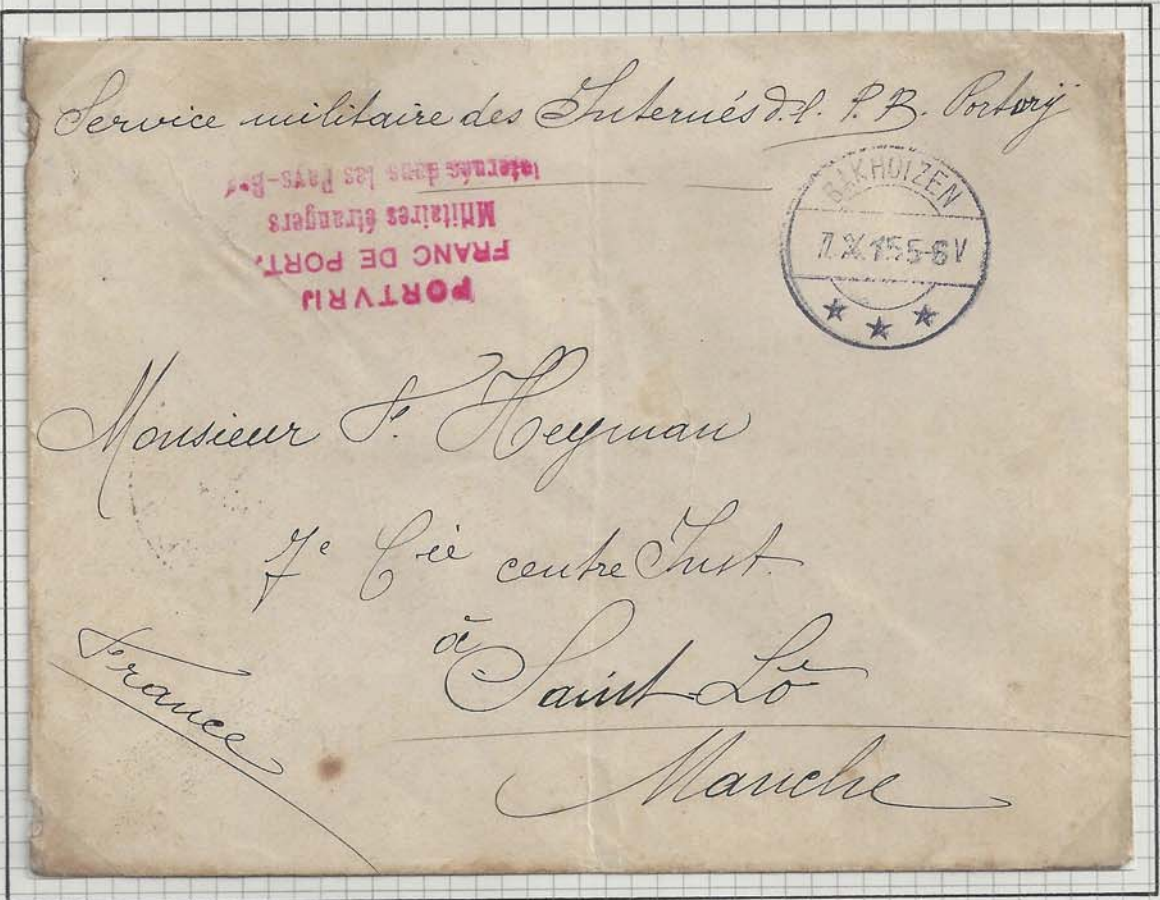
Letter from BAKHUIZEN to FRANCE dated 7th Oct. 1915

Cancelled with Bakhuizen civilian C.D.S.

Cachet 'PORTVRID FRANC DE PORT' etc in red ink

Backstamped Belgian military canceller (un-numbered) 13th October.

Bakhuizen Camp - in Gaasterland, Friesland area. Opened on 10th October 1914 for Belgians who were later transferred elsewhere. Date of closure not known, but possibly December 1916.



DUTCH INTERNMENT CAMP MAIL.

DELFT.

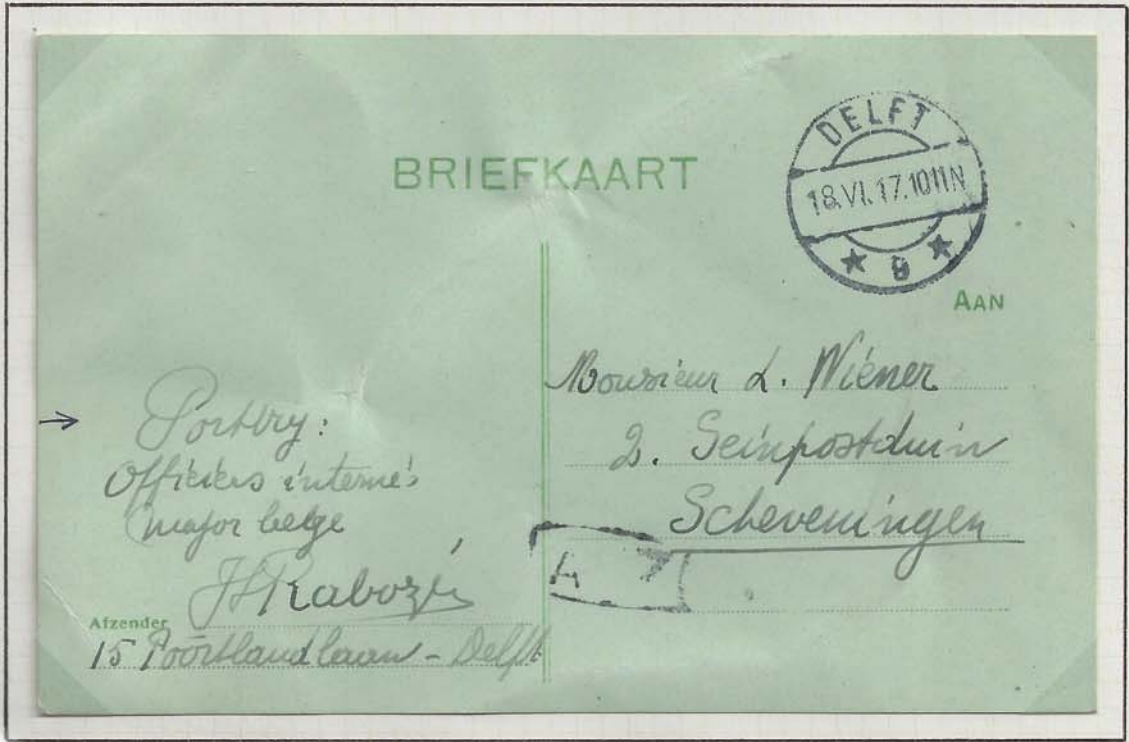
OFFICER - ON - PAROLE

Officers on trust were allowed to live and work outside of the camps. Mainly around DELFT, LA HAYE and SCHEVENINGEN areas.

Address given as Delft possibly private accomodation.

Postcard DELFT to SCHEVENINGEN dated, 18 June 1917.

Text on reverse advises of a proposed visit and meeting opportunity in Scheveningen.



PRINTED IN GREAT BRITAIN BY KINGWOOD MANUFACTURING CO. LTD. BIRMINGHAM

DUTCH INTERNMENT CAMP MAIL.

'EINDHOVEN'

Located near to the Belgian border, this appears to be from a group working there from another permanent camp.

The cancellation 'EINDHOVEN * 6 *' is that of a civilian post office.

This picture-postcard of an SHERBOGENSBOSCH street scene is from EINDHOVEN

UTRECHT dated 22 November 1917.

PORTVRO... cachet



DUTCH INTERNMENT CAMP MAIL.

'OLDENBROEK'

Postcard from OLDENBROEK to UTRECHT dated 9 November 1915, cancelled at the nearby town of ELBURG.



card bears photograph of internee funeral procession.



Note - NO PORTVRIJ.... cachet.

DUTCH INTERNMENT CAMP MAIL.

ELBURG +1+

Postcard from OLDEBROEK to MAASTRICHT dated 6 July 1916.

Oldebroek had it own camp canceller but sometimes mail was posted outside and received the cancellation of nearby ELBURG.

Note - no PORTVRIJ...cachet.

Marked arrival 'Maastricht 4' 7 July.

Writer also provides an addresse for a friend at 'CAMP DE EDE'

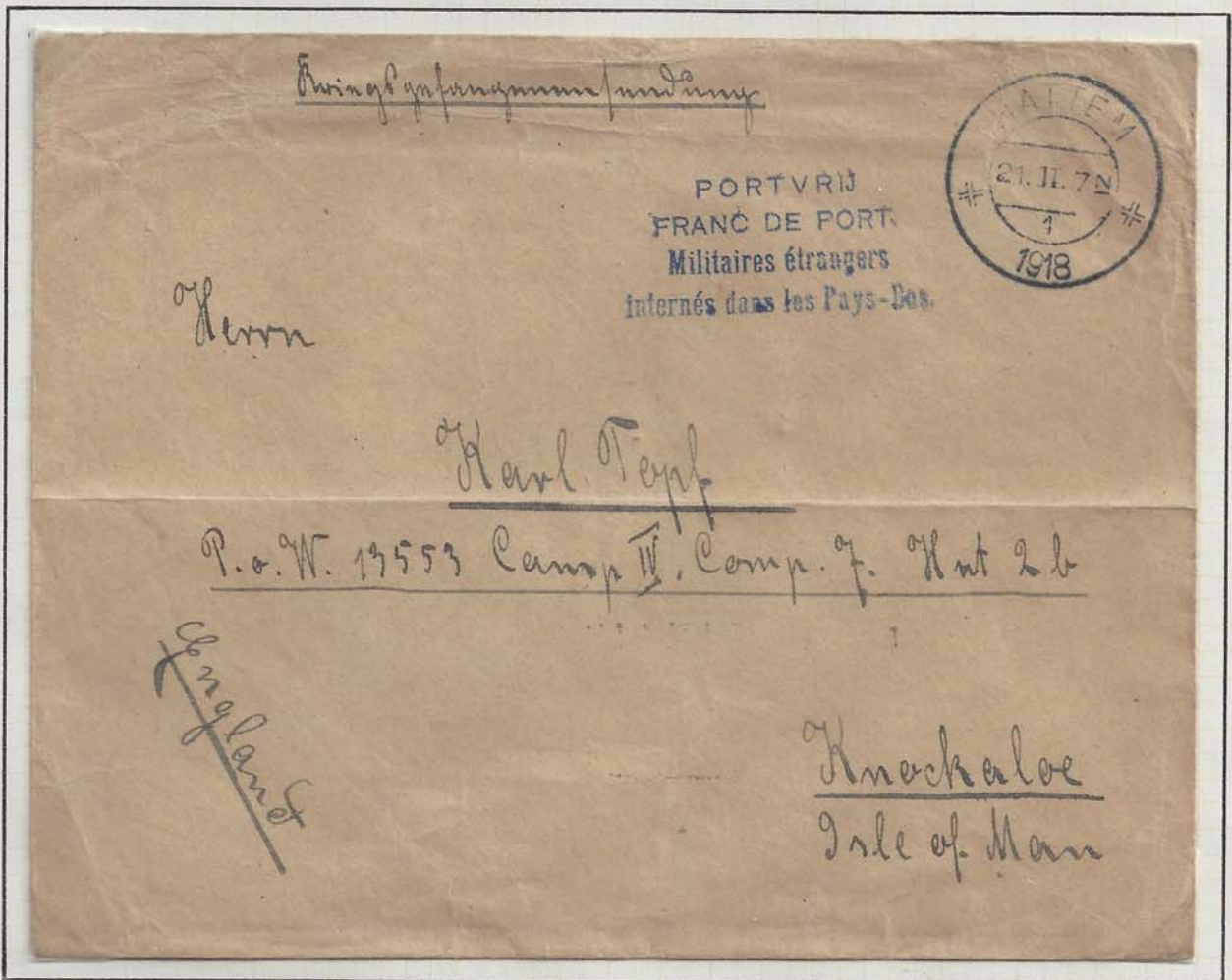


DUTCH INTERNMENT CAMP MAIL .

' HATTEM'

Envelope from HATTEM to ISLE OF MAN dated 21st February 1918.
'Portvrij.....' cachet on letter from German Army Deserter.
Hattem camp near Zwolle was reserved for Germans only.

Letter open in U.K. and resealed with label 'OPENED BY CENSOR P.W. 379'
From an internee who labels himself KRIEGSGEFANGEN... (P.O.W.) and is addressed to
P.O.W. on the Isle of Man.



Printed in Great Britain by the Phoenix Press Ltd, Bournemouth

DUTCH INTERNMENT CAMP MAIL.

Prisoner Letter from Hattem to ^{HATTEM} Berlin dated 29th April 1918.

'Portvrij.....' cachet in violet ink.

Cachet 'HATTEM # INTERNEERINGSDEPOT 1918'

This was a depot reserved for German Army Deserters. Holland did not detain P.O.W.'s as it was a neutral nation.

German censor mark of COLN-DEUTSCH



This camp was open from 1916 until 1918 - total number of internees unknown.

OF 23 LEAF 2018/18 PHILATELIC PUBLISHERS LTD RINGWOOD HAMPSHIRE PRINTED IN GREAT BRITAIN

DUTCH INTERNMENT CAMP MAIL.

HATTEM.

Envelope marked Prisoner of War mail from HATTEM to KIEL dated 7 Nov 1918.
'Portvrij.....'

Cancelled '# HATTEM #' 1

Camp reserved for German Army Deserters. Opened 1916, closed 1918

Censor mark COLN-DEUTSCH office.

Although bearing the POSTVRIJ... cachet, the writer describes himself as a P.O.W.

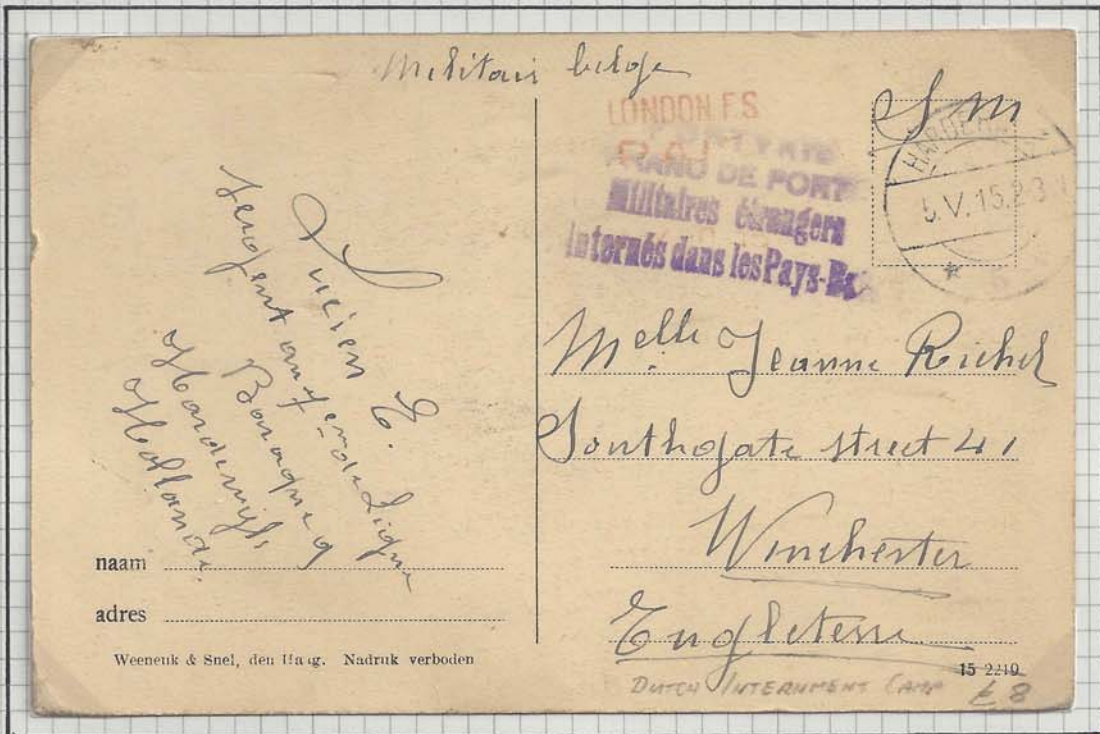


UNITED LEAF PUBLISHERS LTD. RINGWOOD HAMPSHIRE PRINTED IN GREAT BRITAIN

DUTCH INTERNMENT CAMP MAIL

'HARDERWIJK * 5 +'

Picture Postcard from HARDERWIJK CAMP to ENGLAND dated 5th May 1915.
Manuscript 'Militaire Belge' and 'S.M.'



Franked with camp stamp Harderwijk and 'Portvrijek' in violet ink.



Franked on arrival in London.

Albert, Roi des Belges.

DUTCH INTERNMENT CAMP MAIL.

TILBURG

Card from TILBURG to BERNE dated 12th July 1916.

Canceller of TILBURG * 3 * ?

'Portvrij.....'

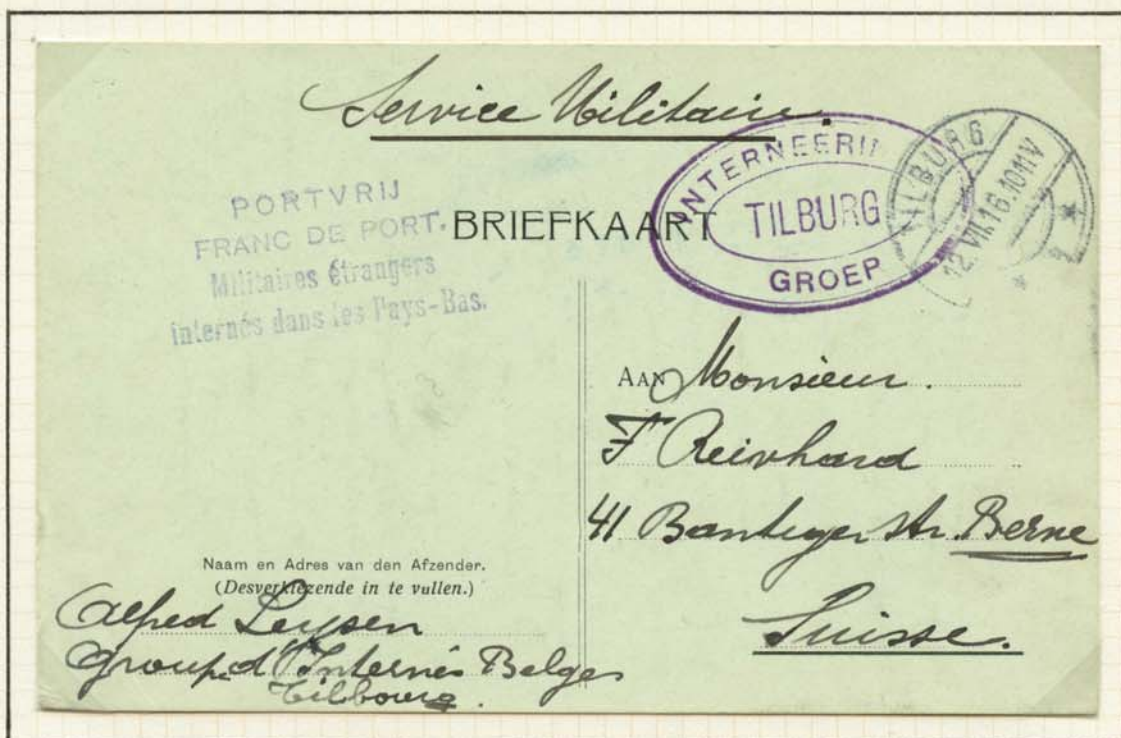
Cachet of 'TILBURG INTERNEERINGS GROEP'

Tilburg was originally opened on the outbreak of war to accommodate wounded soldiers. Period of use mainly 1916.

Winter advises that he has just been transferred to the Tilburg Camp.

-P. 82
St. Jorburg

Q11733 LEAF COLLECTA PHILATELIC PUBLISHERS LTD RINGWOOD HAMPSHIRE PRINTED IN GREAT BRITAIN



DUTCH INTERNMENT CAMP MAIL.

'URK'

Envelope from URK to AMSTERDAM dated 2nd April 1915.

'Portvrij.....' cachet in violet.

URK camp on an island in the Zuider Zee was opened in 7th April 1915 and closed in 9th November 1916

It was reserved for officers who would not give their word not to try to escape. (Belgians only)

Backstamped arrival AMSTERDAM 2nd April.



Note - URK ISLAND no longer exists as it now lies on the edge of a reclaimed polder.

DUTCH INTERNMENT CAMP MAIL.
'UTRECHT'

Photograph of Belgien Military Internees employed in UTRECHT.
Probably a working party from one of the nearby camps, as
there was no camp registered as being based there.

Print on back of card includes 'Property of the Life Insurance Company - "UTRECHT"'



DUTCH INTERNMENT CAMP MAIL.

'VUGHT'

* 3 *

Photo-postcard of AUTO-CANON from VUGHT to UTRECHT dated 14th June 1916.
No 'Portvrij' cachet but card is clearly sent by an internee at VUGHT.
Camp was probably a 'Depot' or 'Group' linked to another major camp.
Mail would be put through nearest civilian Post Office.
VUGHT is near TILBURG.



DUTCH INTERNMENT CAMPS.

'ZEIST 1'

Pasteboard of ZEIST CAMP 1 Billiard Room cancelled 'AMERSFOORT 10' 21-VII-16.
 Posted from AMERSFOORT to LONDON dated 21st July 1916. No Postvrij... cachet.



Zeist-Amersfoort was a large complex containing 16,500 internees. It had a large range of social amenities to help occupy the internees spare time.

DUTCH INTERNMENT CAMPS

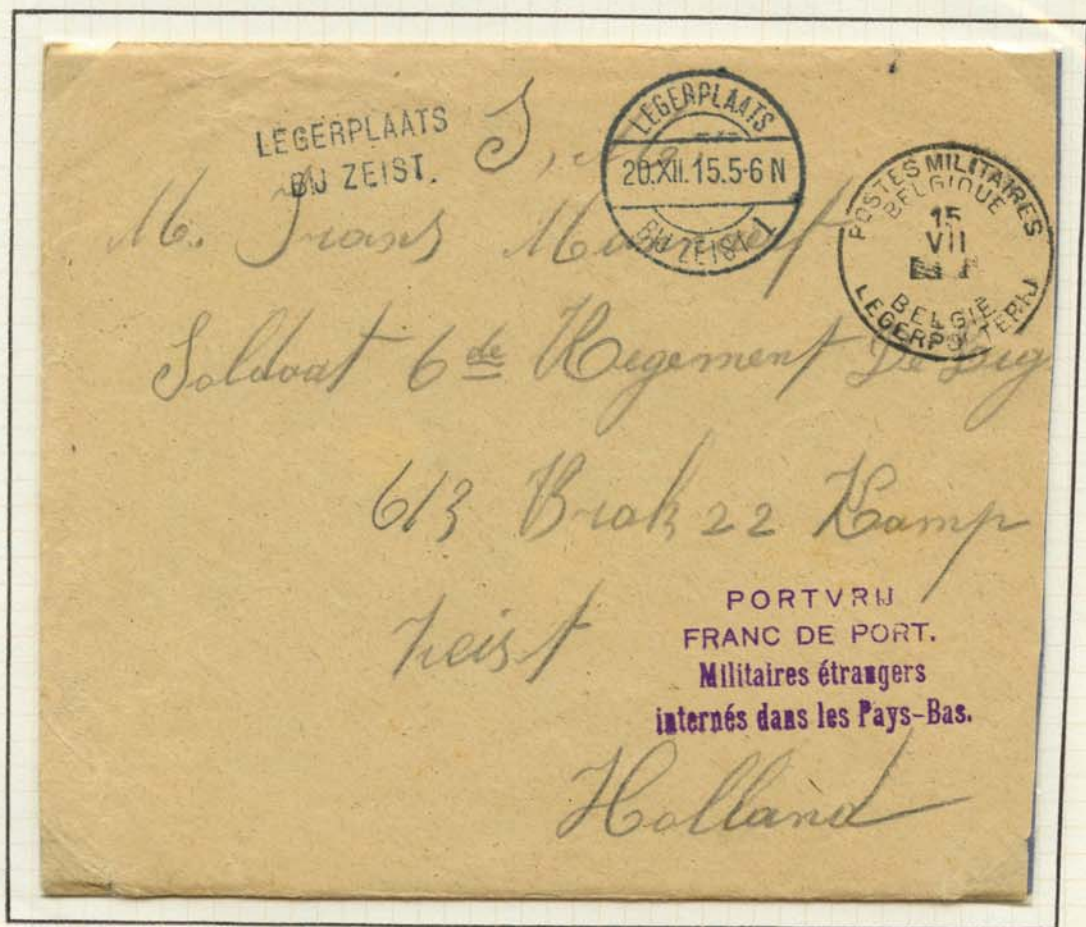
Envelope from WAR ZONE to ZEIST CAMP dated 15th July :

Cancelled by P.M.B. cachet of Military Unit. (unnumbered)

Marked arrival 'LEGERPLAATS BIJ ZEIST 1' 20th December 1915!

Added straight-line LEGERPLAATS BIJ ZEIST. This mark was put on incoming mail to the camp only between 19th December and 24th December 1915

This was the largest camp complex holding 16,500 internees. It was divided into 2 parts with a wide range of social and sport amenities.



LEGERPLAATS
BIJ ZEIST.

LEGERPLAATS
20.XII.15.56 N
BIJ ZEIST

POSTES MILITAIRES
BELGIQUE
15
VII
LEGERPLAATS

M. Frans Meijer
Soldaat 6^{de} Regiment De Eng
613 Blok 22 Camp
Zeist

PORTVM
FRANC DE PORT.
Militaires étrangers
internés dans les Pays-Bas.

Holland

DUTCH INTERNEE CAMPS

GREEN LABEL.

Envelope from **OLDEBROEK** INTERNEE CAMP to **BRAOQUEGNIES** dated 4th February 1916.

Green Label applied and cancelled 'LEGERPLAATS 85 OLDEBROEK/2'

As the Germans had not approved the labels and were afraid that messages could be hidden on the back (note-stamp lifted for inspection), all letters were marked and returned to Holland.

Marked **ZURÜCK/WEIL UNZULÄSSIG** in violet ink in at least 3 different formats

Period of attempted use 3rd February - 8th March 1916.



DUTCH INTERNEE CAMPS

'GREEN LABEL'

Envelope from RIJS Internee Camp to TOURNAI dated 5th Feb 1916.

Dutch Green Label applied and cancelled 'RIJS-INTERNEERINGSDEPOT'

All internees were allowed 2 letters or cards to be sent each month and by late 1915 this was being abused. These special stamps were created and intended to be rationed to control the outgoing mail which was post-free.

Unfortunately the labels had not received the approval of the Germans who feared that messages could be written on the reverse. All letters were therefore returned to Holland with the cachet 'Zurück Weil unzulässig' or similar.



Fig 68.
Sitzeibstg

The known period of use was 3rd February 1916 to 8th March 1916

Rijs was an internment Depot in Gasterland which opened on 10th October 1914 for Belgians only. It was closed around December 1916 and the occupants transferred to Zeist-Amersfoort and Harderwijk.

DUTCH INTERNEE CAMPS

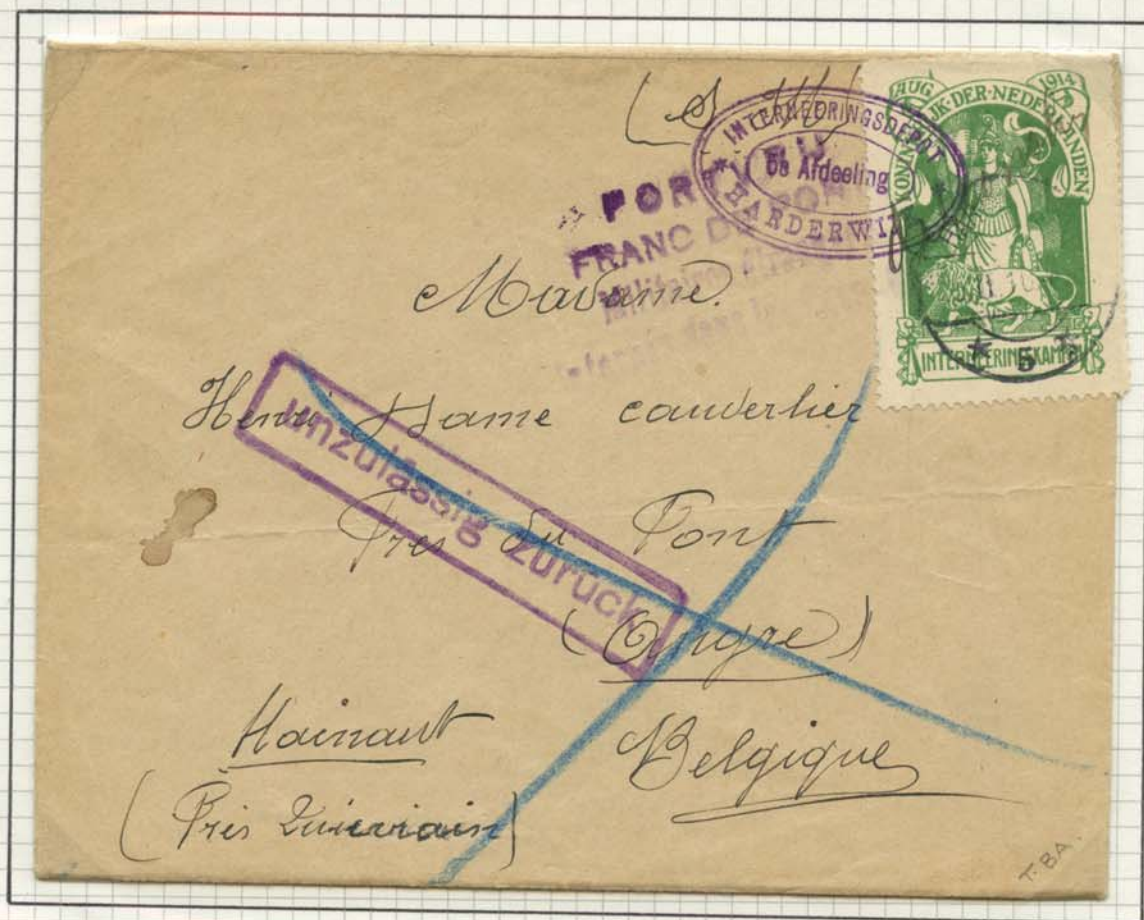
'GREEN LABEL'

Envelope from **HARDERWIJK** Internee Camp to **HAINAULT** dated **5th Feb 1916**.

Manuscript '**S.M.**' and Green Dutch Label applied. Tied by oval cachet and '**PORTVRIJ.....**' stamp indicating free franchise. Harderwijk C.D.S.

The Germans had not approved of the labels and were afraid that messages could be written on the back - so all letters were returned to Holland after marking with the cachet '**UNZULASSIG ZURUCK**' (Return inadmissible) boxed in violet.

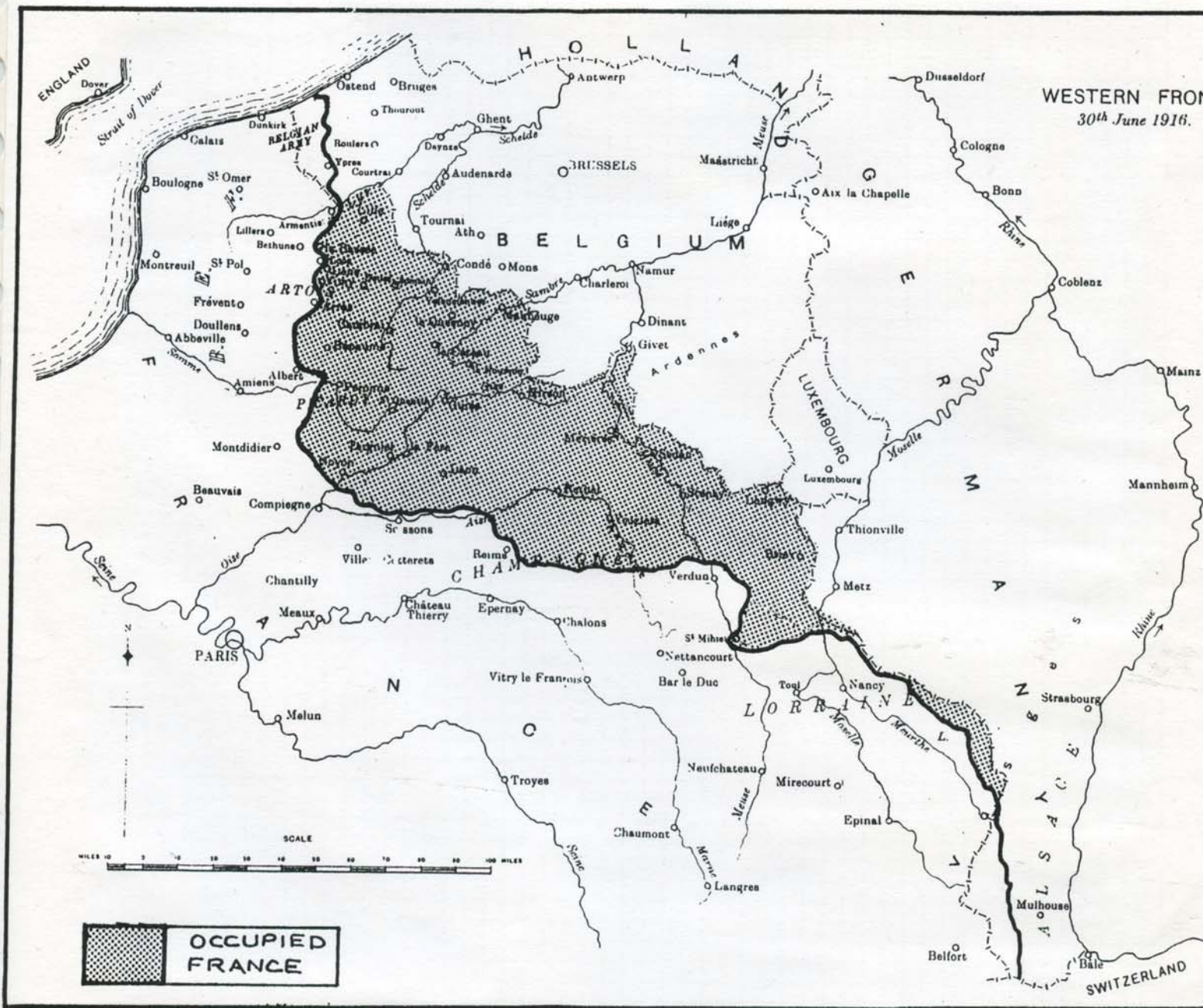
Backmarked in manuscript '**5/2/16 B 28 CAMP HARDERWIJK**'



Harderwijk camp was one of the largest internment camps in **HOLLAND** and according to Dutch records housed about 8000 Belgian Soldiers.

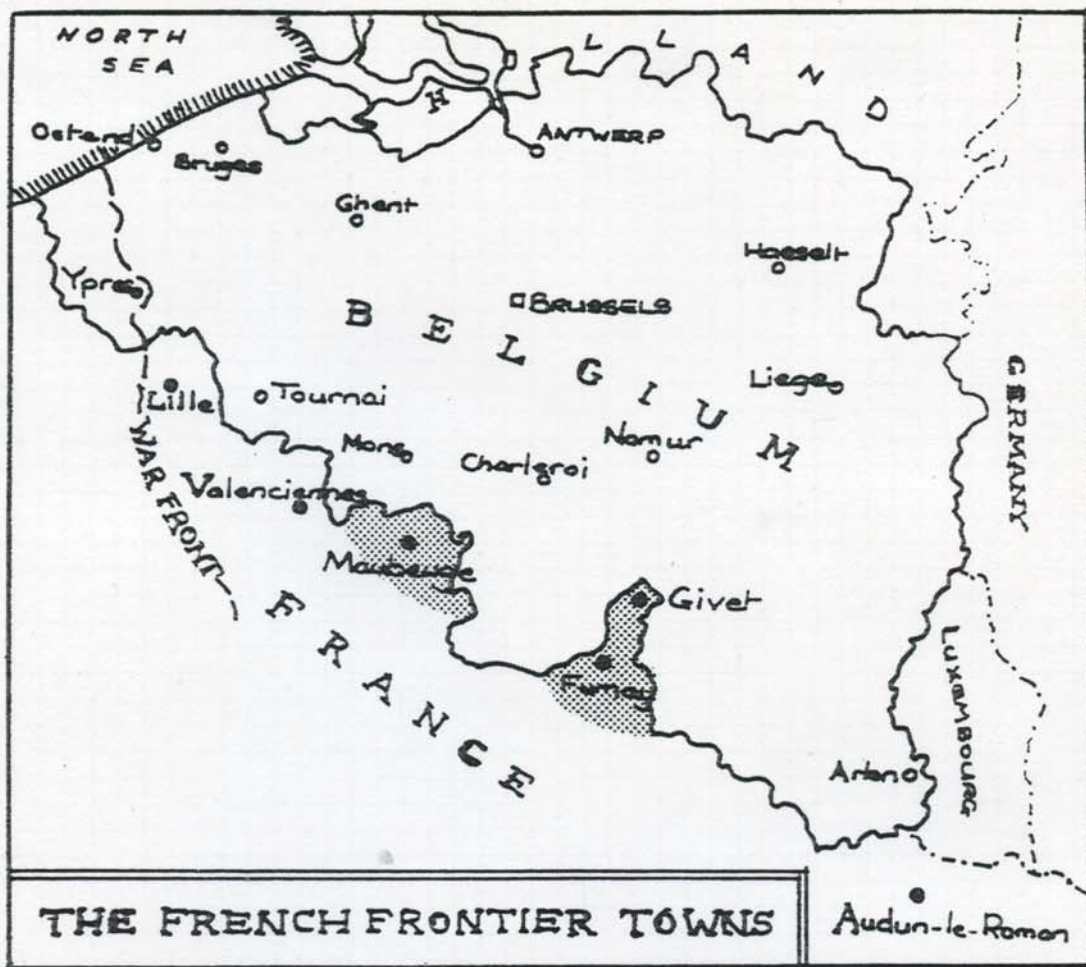
THE GERMAN OCCUPATION OF NORTHERN FRANCE WORLD WAR I

by R. T. Harrison



Map showing limit of German occupation

Most of occupied northern France remained within the Etappen Zone but the regions of Givet, Fumay and Maubeuge were considered sufficiently safe to be attached instead to the General Government Postal Administration of Belgium

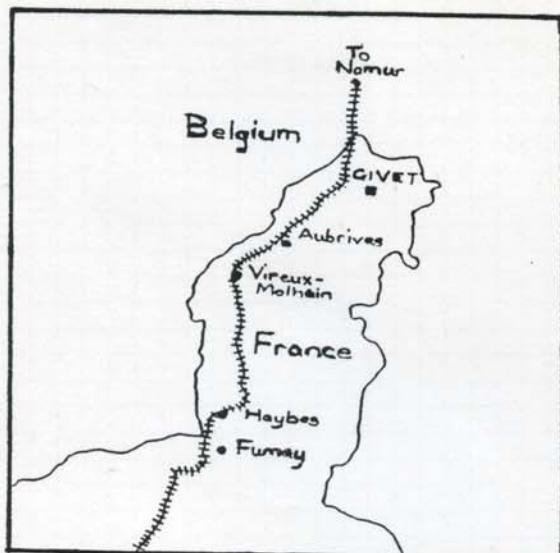


Map showing the general location of
French Frontier towns

Details of Post Offices

By a compilation of various sources and with the help of the late Ted Coles of the France and Colonies Philatelic Society, the following towns are listed as having Post Office status for civilian use during the war:

Town	Date Opened	Date Closed	Main Office
Aubrives	11.3.16	31.1.18	Givet
Givet	15.1.15	31.1.18	
Vireux-Molhain	1.1.16	31.1.18	
Fumay	30.6.15	31.1.18	
Haybes	30.6.15	31.1.18	
Maubeuge	1.6.15	6.10.16	Maubeuge
Hautmont	30.4.16	6.10.16	
Jeumont	30.4.16	6.10.16	
Colleret	15.9.16	6.10.16	



Map of Givet District



Map of Maubeuge District

Postal Cancellations Used

The table below lists the known cancellations, together with the relative scarcity. As would be expected, it is the three main towns of Givet, Fumay and Maubeuge which are the most frequently encountered but it should be stressed that none of these cancellations are commonly found being of interest to both Belgian and French collectors.

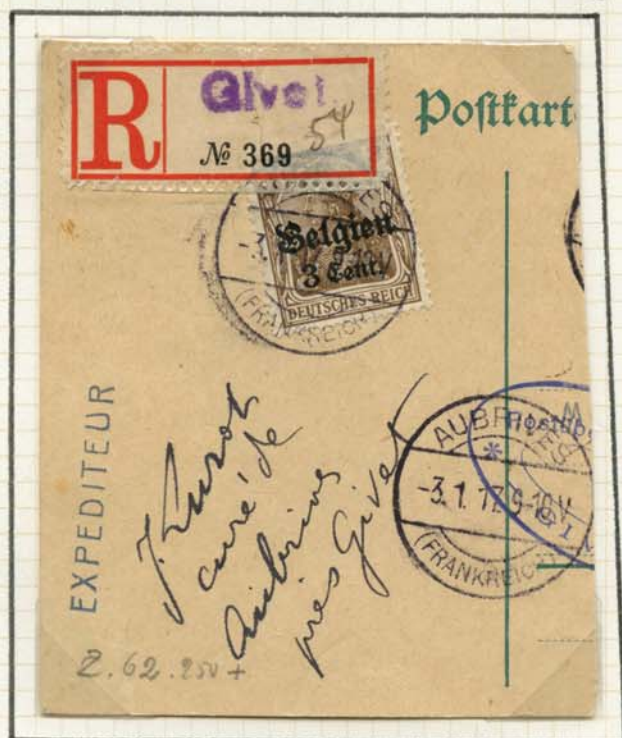
Town	Type	Diameter	Inscription	Relative Scarcity
Aubrives	German 'Bridge'	26.5mm	Aubrives//(Frankreich)	6
Colleret	French Single Circle	27mm	Colleret//Nord	20
Fumay	German 'Bridge'	27mm	Fumay//(Frankreich)	5
Givet	German 'Bridge'	24mm	Givet//(Belgien)	15
	German 'Bridge'	24mm	Givet//*a*	5
	German 'Bridge'	24mm	Givet//***	4
	Belgian Railway Cancel		Givet No. 2	?
Hautmont	French Single Circle	24mm	Hautmont//Nord	17
	French Double Circle	24mm	Hautmont//Nord	17
Haybes	German 'Bridge'	27mm	Haybes//(Frankreich)	7
Jeumont	German 'Bridge'	27mm	Jeumont//(Frankreich)	16
Maubeuge	German 'Bridge'	27mm	Maubeuge//*(Frankreich)*	6
	Straight Line	29 x 5mm	Maubeuge	-
Sars-Poteries	German 'Bridge'	27mm	Sars-Poteries//*(Frankreich)*	20
Vireux-Molhain	German 'Bridge'	28.5mm	Vireux-Molhain//(Frankreich)	6
	German 'Bridge'	28.5mm	Vireux-Molhain//*(Frankreich)*	8
	German 'Bridge'	28.5mm	Vireux-Molhain/2//*(Frankreich)*	9

Note - the higher the number, the greater the scarcity



'AUBRIVES'

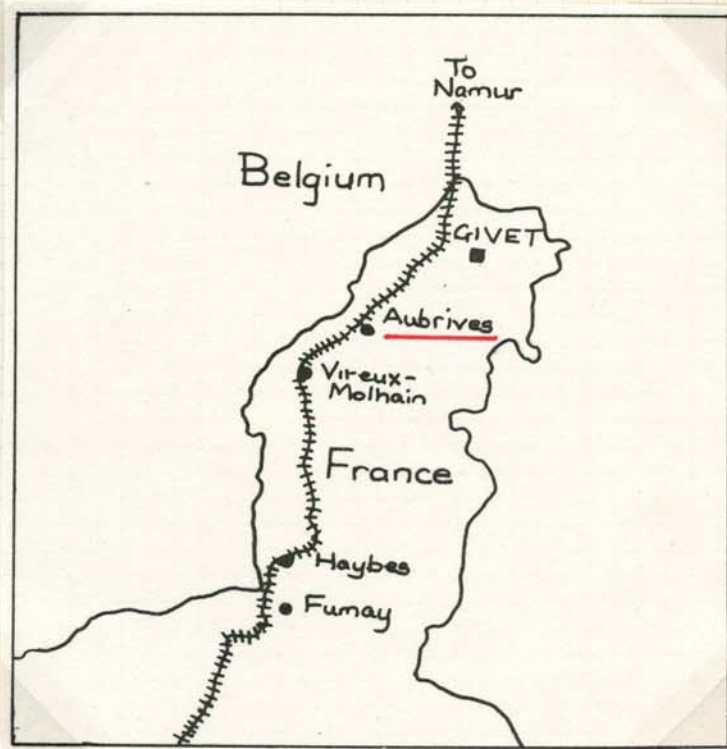
Postal Stationery Card from **AUBRIVES** dated **3rd January 1917**
Cancelled **AUBRIVES (FRANKREICH)**. Registered at Givet.



The Post Office at **Aubrives** was opened on **11th March 1916** and closed on **31st Jan 1918**.

Givet acted as the main office to which this card was sent for censorship.

Note - this part cover is from the LEJAER collection addressed to **TRIS PONTS**.



FUMAY (FRANKREICH)

Letter Card from FUMAY to BRUSSELS dated 14th Aug 1916

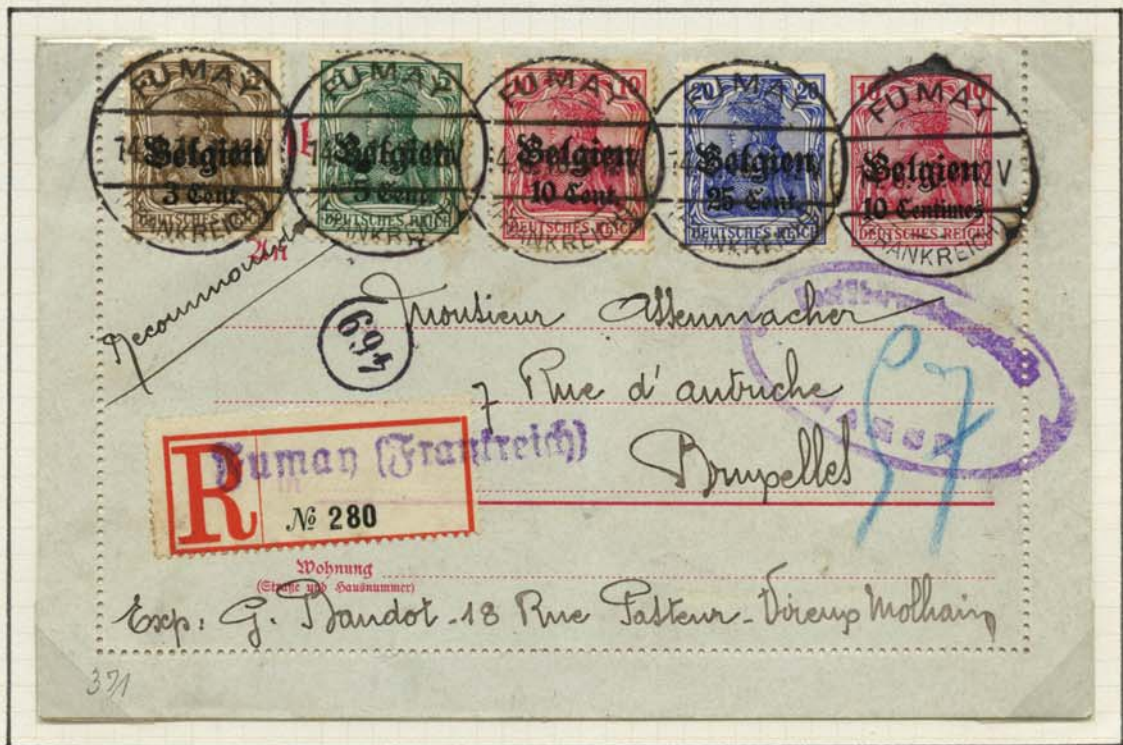
Added adhesives stamps and Registration label.

Cancelled FUMAY (FRANKREICH) C.D.S.

Fumay was one of the French border towns which came under the Government General of Belgium and had its own postmark.

Backstamped arrival Brussel 1^e 15th August.

Oval censor cachet of NAMUR



FUMAY

Postcard from FUMAY to BRUSSELS dated 20th December 1916.

Franked with 10 Pfennig Germania overprinted Belgien 10 Centimes.

Cancelled FUMAY (Frankreich)

Censor mark Geprüft Kreischeff Phillippeville.

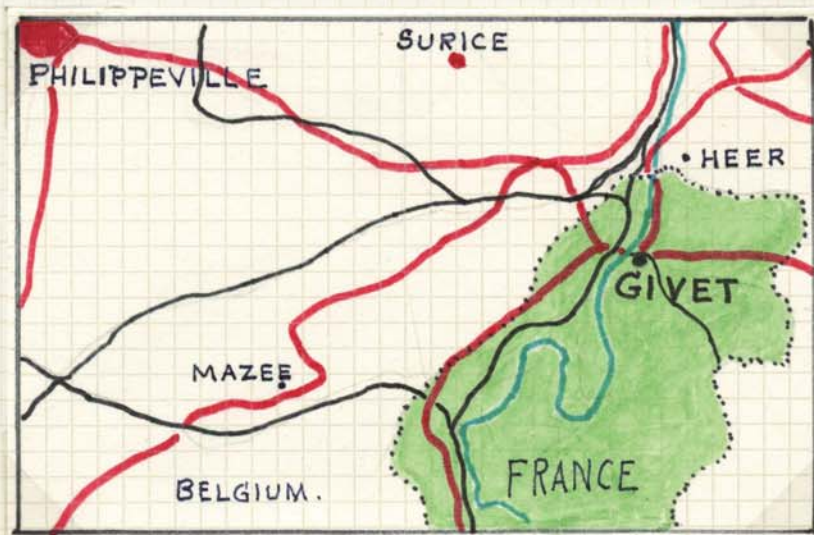
Brussels postmans mark 748 in circle.



GIVET (BELGIEN)

Envelope from **AUBRIVES** to **CHARLEROI** dated **15th April 1915**.
Franked with **10 Pfennig Germania** overprinted '**Belgien 10 Centimes**'
Cancelled **GIVET (BELGIEN)**. This canceller was in use between
15th January 1915 and **31st May 1915** then withdrawn due to GIVET
being in **FRANCE** not **BELGIUM**.

Censor cachet 'Geprüft Kreischef Philippeville'



GIVET (BELGIEN)

Envelope from GIVET to BRUSSELS dated 18th April 1915.

Franked with pair of 5 Pfennig Germania overprinted 'Belgien-5 Centimes'

Cancelled GIVET (BELGIEN) bridge-type C.D.S.

This canceller was in use between 15th January 1915 and 31st May 1915

then withdrawn due to GIVET being in France not Belgium.

Censor cachet 'Geprüft Kreischel Philippeville' with initials of censor.



GIVET (BELGIEN)

German Postcard from GIVET (FRANCE) to DARMSTADT dated 11th May 1915.

Franked with 10 Pfennig 'Germania'

Cachet 'KRIEGSGEFANGENENSENDUNG' - Prisoner-Of-War Letter-in violet.

Canceller 'GIVET (BELGIEN)' of German bridge-type, used to cancel the stamp and repeated clear of the stamp.

This canceller was withdrawn due to GIVET being in France not Belgium.

In use 15th January 1915 to 31st May 1915.



Card from Prisoner at Fumay to Prisoner in Camp at Darmstadt.



HAYBES(Frankreich)

Private Postal Stationery Card from HAYBES to BRUSSELS dated 2nd August 1917.
Cancelled HAYBES (Frankreich) bridge-type canceller.

Haybes was a french town near the Belgian frontier which came under the control of the Government General of Belgium.

This office was opened on 1st April 1916 and closed on 31st January 1918.



JEUMONT

FRENCH FRONTIER TOWNS.

Envelope from MAUBEUGE to NAMUR dated 8th August 1916.

Franked with Germania overprints 5 Centimes and 10 Centimes (Oc 2/3)

Stamps cancelled JEUMONT (FRANKREICH) although envelope bears an oval censor cachet of Maubeuge.

Backstamped arrival NAMUR NAMEN 10th August.



MAUBEUGE

Picture Postcard MAUBEUGE (Porte de France) to BRUSSELS dated 30 July 1915.

Cancelled 'MAUBEUGE *(FRANKREICH)*'

Dusseldorf violet unit cachet.

Maubeuge office open 1st June 1915 - 5th October 1916.



N. Sch. B. Ed.

Herrn Heinrich Tommler, Brussels

Fieldpost

Maubeuge 29.7.15

Please forgive me for not writing until today. Well, again my most heartfelt thanks for your exceptional guided tour through Brussels. I hope you are as well as I am. Have you, in the meantime, guided anybody else? I hope I shall again have the opportunity to visit there. If I were to visit Brussels again I will most certainly call on you.

Warmest greetings with Heil and Victory.

Christian Bering.

MAUBEUGE

Feldpost Envelope from MAUBEUGE to GERMANY dated 27 July 1915.
Unit cachet '2 Landst. JAGER KOMP VII AK MAUBEUGE' in green ink.
Cancelled 'MAUBEUGE (FRANKREICH)'



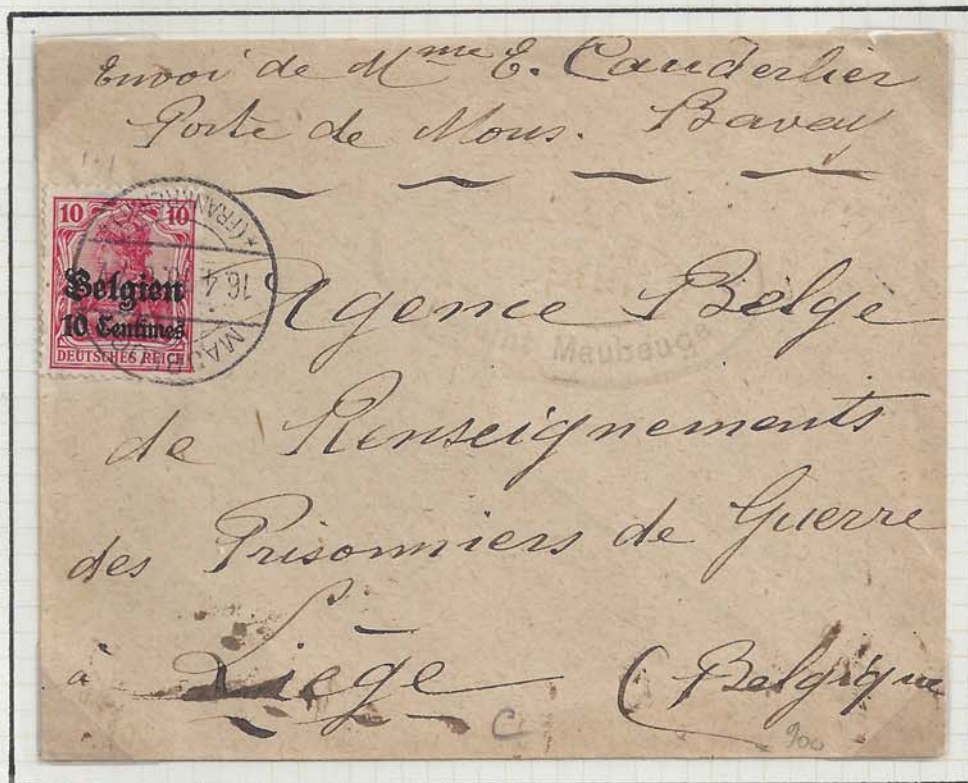
'MAUBEUGE'

Envelope from **BAVEU** to **LIEGE** dated **16 April 1916**

Franked with **10 Pfennig** Germania overprinted '**Belgien 10 Centimes**'

Cancelled '**MAUBEUGE (FRANKREICH)**'

Oval censor cachet of Maubeuge.



'MAUBEUGE'

Envelope from MAUBEUGE to BRUSSELS dated 28 August 1916.
 Franked with 3 x 5 Pfennig Germania overprinted 'Belgien 5 Centimes'
 Cancelled 'MAUBEUGE (FRANKREICH)'
 Oval censor cachet 'Postamt Maubeuge'



'MAUBEUGE'

Front from MAUBEUGE to BRUSSELS undated.

Franked with un-overprinted 10 Pf 'Germania'

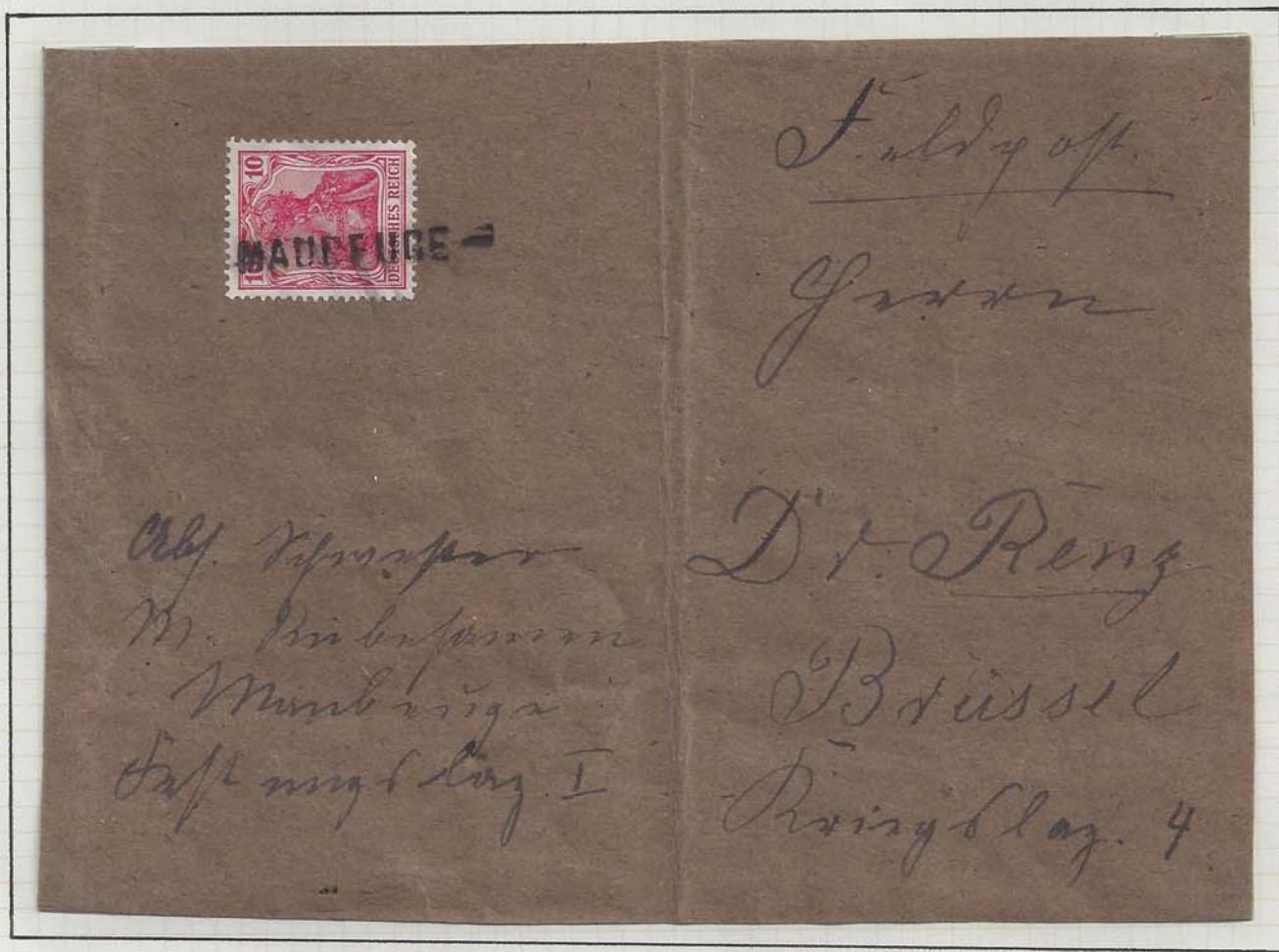
Cancelled by MAUBEUGE straight-line handstamp.

Marked -

Sender - Sister M. RÜBESAMEN

Maubeuge

P.O.W. Camp 1



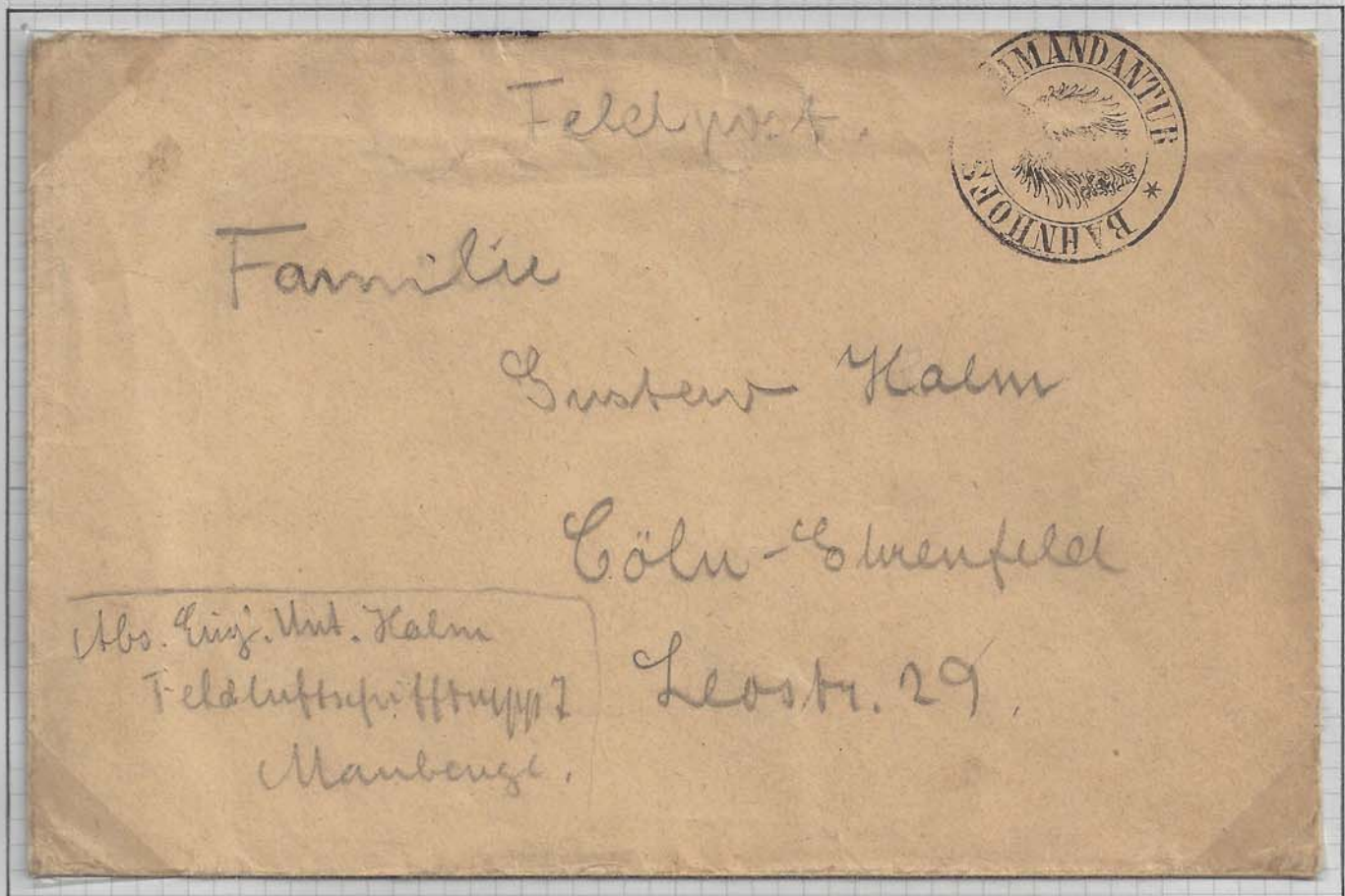
MAUBEUGE.

Feldpost envelope MAUBEUGE to COLOGNE undated.

Cancelled BAHNHOF'S KOMMANDANTUR * of Maubeuge.

Free franchise - no censor markings or backstamps.

Sender of FELDLUFTSCHIFFGRUPPE - MAUBEUGE. (Airship group)



'MAUBEUGE'

Bank Envelope from MAUBEUGE to VALENCIENNES dated 23^d Jan 1918.
 Franked with pair of 10 Pfennig Germania overprinted '10 Cent'
 Cancelled by bank cachet and 'Geprüft P. U. St.' boxed.
 Rectangular bank cachet with serial NO 15621.
 Bank censor cachet in bottom corner.
 Backstamped CRÉDIT-LYONNAIS MAUBEUGE 23^d Jan 1918.

